

# St. Paul's Terrace Seniors' Residence

 [Click here for virtual tour video](#)



**Unit 1202**  
2800 Warden Avenue

Asking Price  
**\$399,000**



- ⇒ 2 bedrooms, 2 bathrooms
- ⇒ Kitchen
- ⇒ Bright windows facing North, East, and South
- ⇒ Mostly new appliances
- ⇒ New flooring and fresh paint
- ⇒ Parking Spot

The St. Paul's L'Amoreaux housing campus is home to more than 400 seniors.

Our life lease Terrace units give access to all our services and programs.

**It's a great place to call home!**

For more information, contact our Housing Team at (416) 493-3333 ext. 235



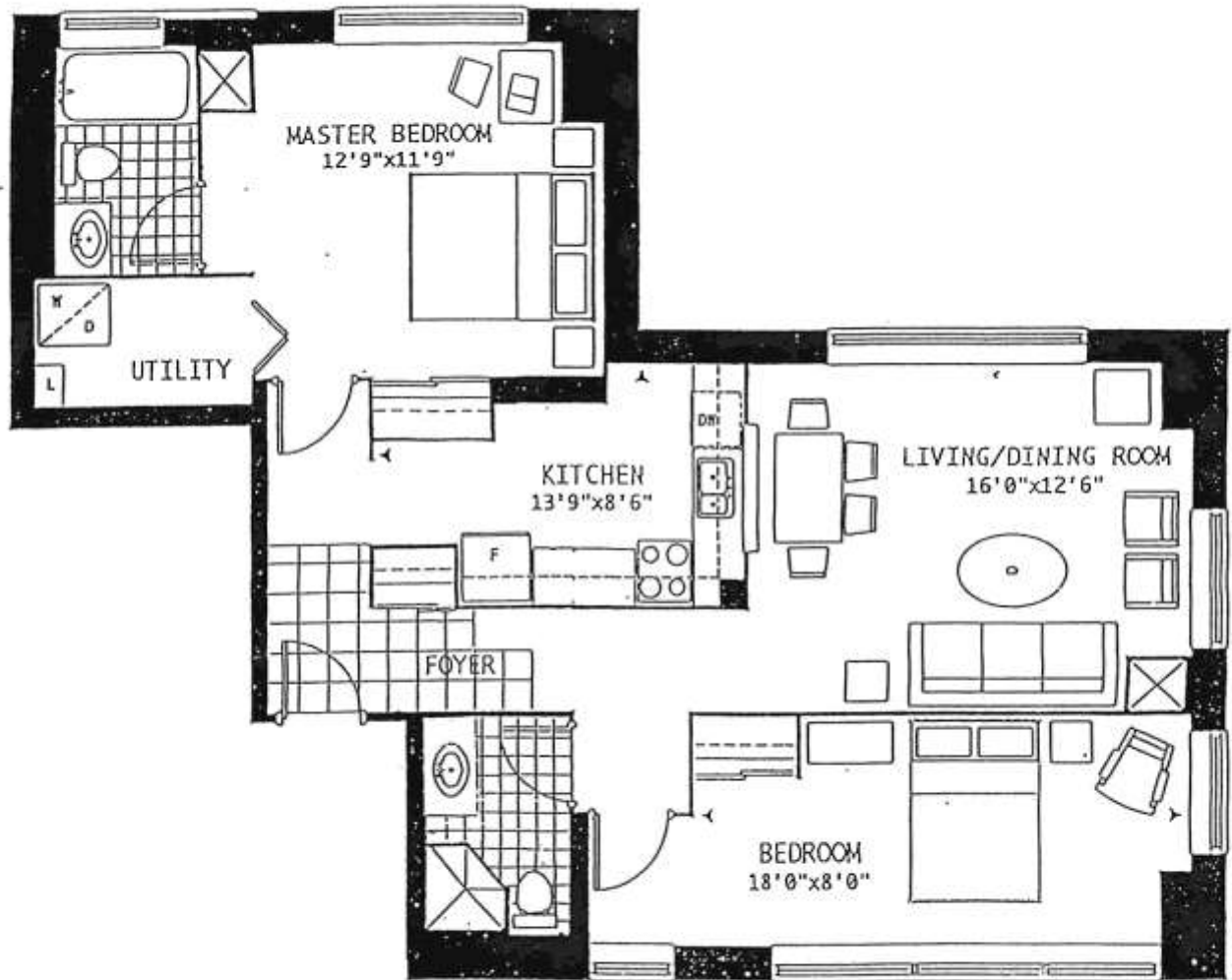
# Terrace Life Lease

1089 ft<sup>2</sup>

Suite 1202

South, East and North Facing

North 北



South 南